

AXIOM-R Encryption

Outdoor Satellite Modem



A Rugged and Compatible
Member of the Paradise Modem Family
with AES-256 Encryption

Overview

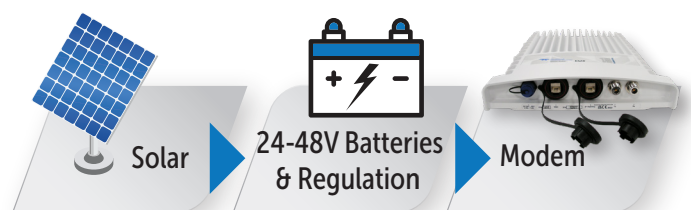
If you have mission critical data, require continuous availability and the utmost security, then you're in our world. The new AXIOM-R is our most powerful Rugged Outdoor SCPC satellite modem, suitable for direct antenna mount.

Designed from the ground up to be rugged, the AXIOM-R is focused on outdoor fixed and portable applications and is ideal for comms-on-the-move.

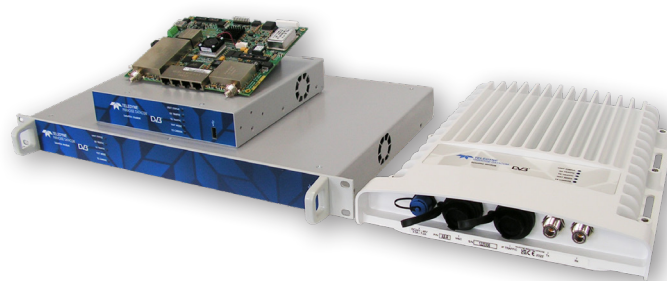
Features include:

- **Weatherproof:** IP67 rated design
- **Size:** 381mm (15") x 280mm (11") x 57mm (2 1/4")
- **Weight:** 4Kg
- **Extended temperature range:** -40 to +60°C
- **High capacity:** IP-centric, DVB-S2X, options up to 345Mb/s Tx, 230Mb/s Rx
- **Low power consumption:** suitable for battery or solar power applications.
- **Wide range floating DC input Voltage:** 24V – 48V $\pm 10\%$, power consumption 30W max (modem only), 150W max (including BUC PSU). Unit is supplied with a DC plug for customer power supply connection.
- **Secure:** SCPC is more secure than TDMA and provides guaranteed bandwidth for critical applications.
- **Enhanced Doppler:** Superior performance for LEO and MEO communications with an allowable frequency shift of up to $\pm 700\text{kHz}$ and rate of change up to $\pm 100\text{kHz/s}$
- Built-in **AES-256 Encryption** for enhanced security

Optimized for Low Power



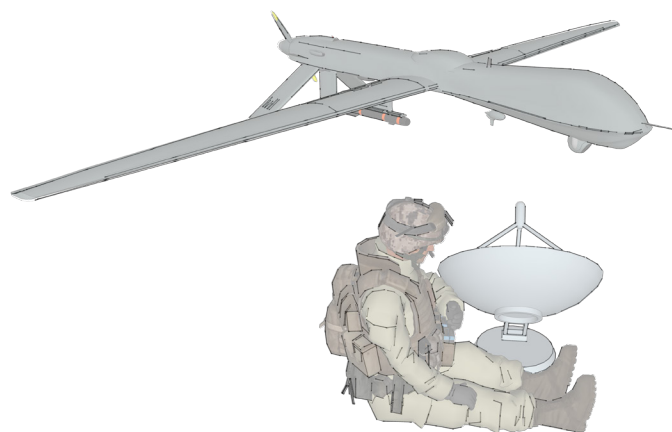
AXIOM-R is ideal for low power applications like solar-powered systems.



AXIOM-R (right) is part of the AXIOM family of IP-centric modems

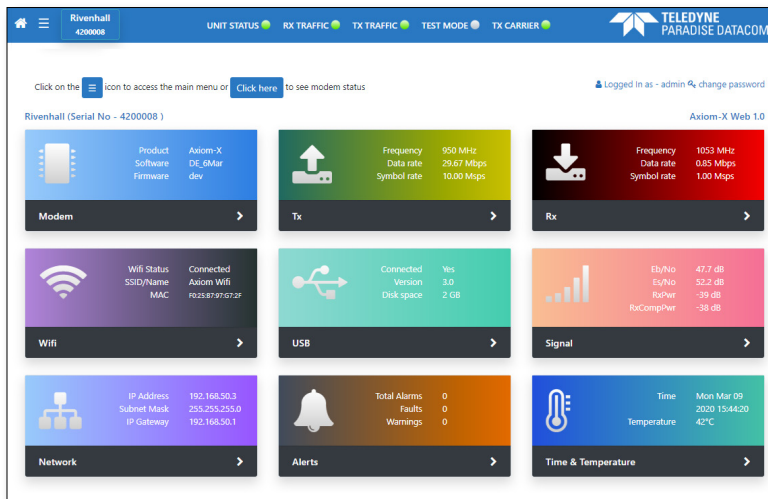
Markets & Applications

- Comms-on-the-move including vehicles, aircraft and UAVs
- Man-packs
- Portable communication systems
- Compact, fixed low-power VSAT terminals
- Satellite news gathering
- Disaster recovery

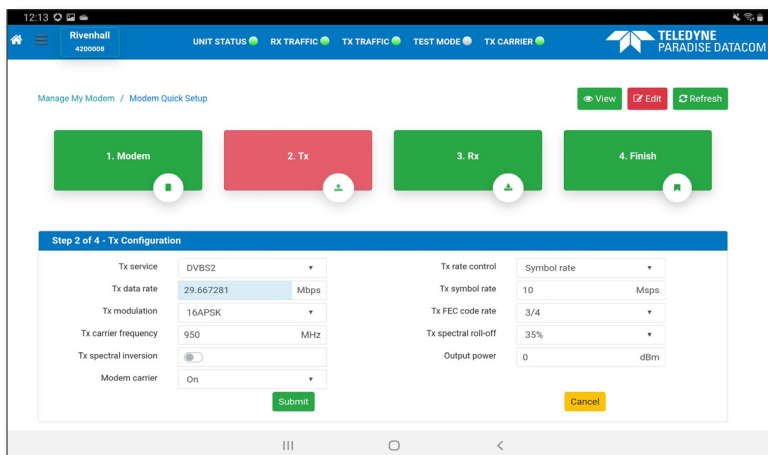


New Web User Interface

The AXIOM-R M&C is via an intuitive Ethernet based web browser ideally suited to use on a tablet, Mobile or laptop PC and allows the user to install, configure and monitor the Modem with ease. In addition, WiFi capability further enhances the ease of use and provides greater flexibility for remote control and installation using portable devices.

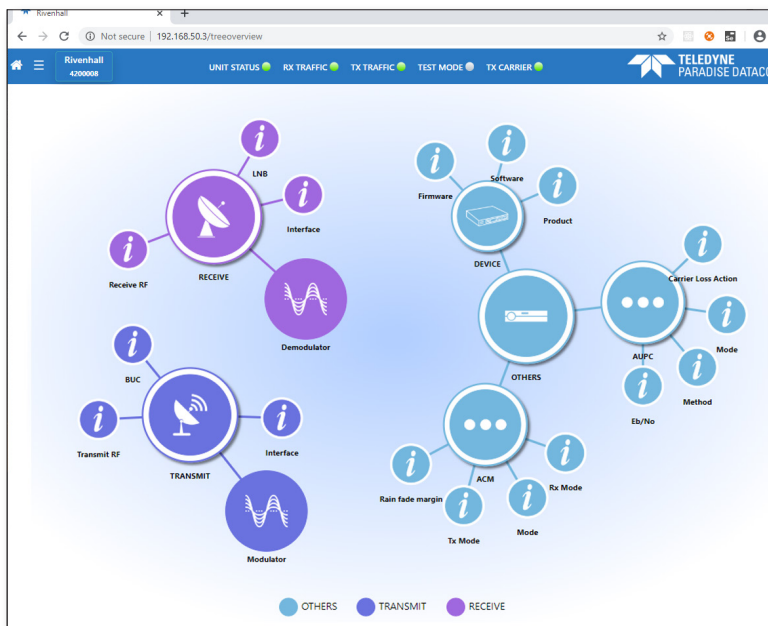


Clear, Intuitive Home views allows easy, one click navigation direct to the required fields



Easy flow configuration allowing quick set-up of key parameters (upper)

Network tree overview (lower)



Tablet view allowing easy on the move Browsing



Built for the Most Stringent Portable Applications

SECURE

- SCPC is both secure, and with Paradise Modems, easy to provision
- For enhanced security, AES-256 encryption is built in

COMPATIBLE

- Reuse your existing code
- No need for extensive retraining of maintenance staff

STATE OF THE ART

- DVB-S2X up to 256APSK provides the highest bandwidth efficiency
- Advanced compression and acceleration features optional
- Ideal for use with constellations

RUGGED

IP67 Outdoor chassis, wide operating temperature range of -40 to +60°C.

CONVENIENT

Built-in BUC power supply reduces the need for external equipment, enabled by SAF option

COMPACT & EFFICIENT

Small size, suitable for antenna mounting and battery / solar power.

WELL EQUIPPED

DC Supply

- Wide range DC input Voltage optimized for 24 V - 48 V operation

Transmitter

Fast: Up to 345 Mbps, 100Mbps
Output power 0 to -40dBm

Receiver

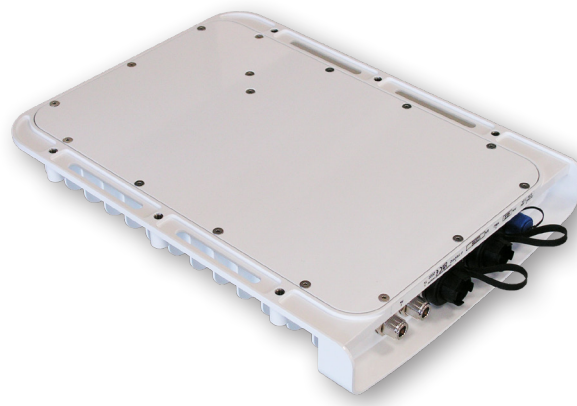
Fast: Up to 230Mbps, 98Mbps

2 Gigabit Ethernet Ports

Convenient – no need for an external switch, saving space, power, wiring;
Layer 2 Bridging, Layer 3 Routing

RF Stages

- Future Proof: Transmit and receive speeds upgradable in the field – only pay for the capacity you need now
- L-band coverage from 950 to 2,150 MHz



Main Specifications

Topology	Point to Point or Star Modem within a Point to Multipoint Network
Standard	DVB-S2: (EN 302 307-1) DVB-S2X: (EN 302 307-2)
Frequency	L-band: 950 to 2150MHz (resolution 1Hz)
Data Rates	Standard: 2,048kbps (Tx); up to 230Mbps (Rx) Tx Options: 5Mbps, 10Mbps, 25Mbps, 100Mbps, & 345Mbps
Data Rate Limits	DVB-S2/S2X: Up to 345Mbps Tx & 230Mbps Rx
Tx Symbol Rate Limits	DVB-S2/S2X: 90ksps to 100Msps
RX Symbol Rate Limits	DVB-S2/S2X: 90ksps to 98Msps 98Msps@QPSK, 85Msps@8PSK/8APSK, 64Msps@16APSK, 51Msps@32APSK, 43Msps@64APSK, 36Msps@128APSK, 32Msps@256APSK.
DVB Features	ACM/VCM, DVB Encapsulation, GSE Encapsulation

Router Specifications

Network Support	Layer 2 Bridging, Layer 3 Routing, Jumbo Frames to 10k bytes, 160k pps Trunking Mode: Supporting 230 Mbps bi-directional traffic at up to 350k pps, each way.
Management	HTTP/S Web Server, SNMP v1, v2c & v3, AAA RADIUS Secure User Login & Access Control Lists, SSH
Protocols	IPv4/IPv6, IEEE 802.1q /p VLAN support, Software Defined Network Support, NAT, DHCP, Network Time Protocol (NTP), sFlow Performance Metrics, Active Queue Management (AQM), MPEG over IP, OpenAMIP Protocol Support, Inter VLAN Routing Support with Virtual Routing & Forwarding
Advanced IP Features	Robust Header Compression (RFC 3095), Payload Compression, Dynamic Routing (RIP V1, V2; OSPF V2, V3; BGP V4), TCP Acceleration, AES-256 Encryption

Modulator Specifications

Modulator	DVB-S2: QPSK, 8PSK & 16APSK DVB-S2X: QPSK, 8PSK, 8APSK-L 16APSK, 16APSK-L, 32APSK, 32APSK-L, 64APSK & 64APSK-L Options for Advanced Modulation: 128APSK, 256APSK and 256APSK-L
Output Power	0 to -40dBm (950 to 2,150MHz)
Transmit Filter Roll-off	DVB-S2: 20%, 25%, 35% DVB-S2X: 5%, 10%, 15%, 20%, 25%, 35%
Harmonics & Spurious	Better than -55dBc/ 4kHz in-band (at 0dBm to -30dBm output)
BUC PSU Option	Allows the DC input power to be used to power a BUC via the Interfacility Link (IFL) (6A Max)
BUC 10MHz Reference	Via IFL cable; 10MHz \pm 0.01 ppm; 2dBm \pm 2dBm
QoS	Provides guaranteed throughput for priority traffic; supports Committed and Burst Information Rates. Stream classification by VLAN ID, IP address, IEEE 802.1p priority, Diffserv DSCP, & MPLS EXP

Demodulator Specifications

Demodulator	DVB-S2: QPSK, 8PSK & 16APSK DVB-S2X: QPSK, 8PSK, 8APSK-L 16APSK, 16APSK-L, 32APSK, 32APSK-L, 64APSK & 64APSK-L Options for Advanced Modulation: 128APSK, 256APSK and 256APSK-L
Enhanced Doppler	Frequency shift: up to \pm 700kHz; rate of change up to \pm 100kHz/s (symbol rate dependent)
Receive Filter Roll-off	DVB-S2: 20%, 25%, 35% DVB-S2X: 5%, 10%, 15%, 20%, 25%, 35%
Input Range	Minimum: -140 + 10 log (symbol rate) Maximum: -78 + 10 log (symbol rate)
LNB Voltage	Selectable 13V, 15V, 18V or 20V DC to LNB via IFL cable; maximum 0.5A

Interface, Mechanical and Environmental Specifications:

Traffic	2-port Gigabit Ethernet switch (RJ45 connectors; Interface used for IP traffic and M&C)	Random ^[1] Vibration	DEF STAN 00-035 Part 3 Materiel Transported by Wheeled Vehicles as Restrained Cargo, On-Road (A1), r.m.s. (g)=1.42. Materiel Transported in Fixed Wing Jet Aircraft (A5), r.m.s. (g)=1.77 (vertical axis), r.m.s. (g)=1.30 (longitudinal and lateral axes). Materiel Installed or Deployed in Wheeled Vehicles, Off-road and Degraded Roads (A17), r.m.s. (g)=2.63.
IF Tx and Rx	L-band: 950 to 2,150MHz (resolution 1Hz) N-type connectors		
Power Supply	Wide range floating DC input Voltage: 24V – 48V \pm 10%, power consumption 30W max (modem only), 150W max (including BUC PSU). Unit is supplied with a DC plug for customer power supply connection.		
Mechanical	Size: 381 x 280 x 57mm; Weight: 4kg	Operating ^[1] Shock	DEF STAN 00-035 Part 3 Materiel Transported or Installed in Military Vehicles Whether Road, Rail or Air (A2), Half-sine, 20g, 11ms.
Environmental	-40°C to 60°C Operating Temperature; 95% relative humidity, non-condensing; FCC, CE and RoHS compliant; Safety: EN62368-1:2014 Edition 2; Emissions: EN55032:2015 Class B; Immunity: EN55035:2017		







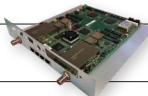

[1] Unit under test operational during exposure

Comparing AXIOM-R to Q-Lite Rugged

Specification	AXIOM-R	Q-Lite Rugged
Data Rate	Tx: 345 Mbps Rx: 230 Mbps	345 Mbps
Symbol Rate	Tx: 100 Msps Rx: 98 Msps ^[2]	70 Msps
Modulation	DVB-S2X up to 256APSK	DVB-S2X up to 256APSK
RF Frequency Range	L: 950 to 2,150 MHz	IF: 50 to 180 MHz L: 950 to 2,450 MHz
RF Tx Power Range	L: 0 to -40 dBm	IF: 0 to -25 dBm L: +5 to -40 dBm (950 to 1,950 MHz) 0 to -40 dBm (1,950 to 2,150 MHz) 0 to -30 dBm (2,150 to 2,450 MHz)
RF Connector	N-type Connectors	TNC IF & L
PCMA Bandwidth	-	72 MHz
Terrestrial Interface Slots	-	Choice of Two
Available WGS-Certified Models?	-	Yes
Available Encrypted Models?	Yes	Yes
Ethernet Ports	2	4
Ruggedness	IP67, -40 to +60°C	IP65, -20 to +55°C
Size, Weight	381mm x 280mm x 57mm, 4kg	440 x 214 x 90mm, 2.5kg
PSU	24 – 48V DC	24V DC, 12V DC option

[2] 98Msps@QPSK, 85Msps@8PSK/8APSK, 64Msps@16APSK, 51Msps@32APSK, 43Msps@64APSK, 36Msps@128APSK, 32Msps@256APSK

The Paradise Family of Secure SCPC Modems

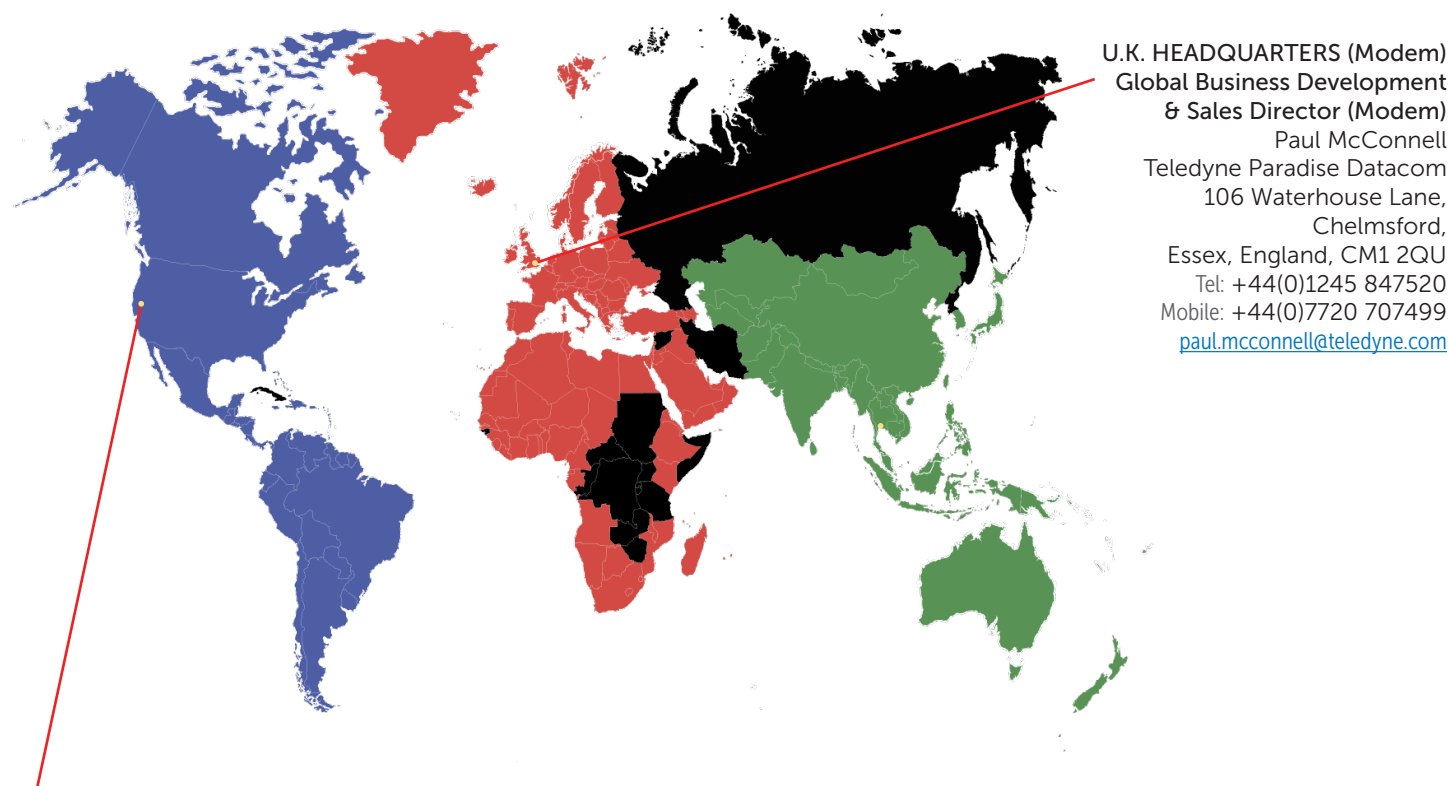
Paradise SCPC Modems		Point-to-Point	Mesh	Point-to-MultiPoint, Star, Hybrid		Features of Note
				Hub	Remote Site	
Standard	1U 19" Rack	QFlex-400	✓		✓	PCMA+ enhanced carrier overlay available
		QMultiFlex-400	✓	✓	✓	Optional Embedded Hub Cancellor
		QFlex-400 P2MP	✓		✓	Configured remote
		QubeFlex	✓			Small Sat/LEO - support for CCSDS
		AXIOM-N	✓		✓	IP-centric modem 
Small Form Factor	Rack Mount Half Width	Q-Lite Half Width	✓		✓	Mountable side-by-side in 1U rack space
		AXIOM-C	✓		✓	Compact IP-centric modem 
	Rugged	Q-Lite Rugged	✓		✓	IP65 weatherproof outdoor modem
		AXIOM-R	✓		✓	IP67 IP-centric modem 
	OEM Card	Q-Lite Card	✓		✓	For OEM integration
		AXIOM-X	✓		✓	Our smallest modem 

All modem models except QubeFlex are also available as **encrypted models**, capable of TCP/IP packet payload encryption using symmetric AES with 256-bit keys. Note that these models are export controlled.

Ordering: AXIOM-R Encryption

Standard Features	Description
	<input checked="" type="checkbox"/> 100kbps to 2.048Mbps DVB-S2 CCM/ACM (EN 302 307-1) Modem , Supporting QPSK, 8PSK & 16APSK, 20%, 25% & 35% Roll off, with 2-port Gigabit Ethernet switch for M&C and traffic; L-band operation 950 to 2,150MHz; high-G 10MHz reference (with G sensitivity rating of 1 x10 ⁻⁹ /g) AUPC: Automatic Uplink Power Control Traffic Shaping: Supports CIR/BIR/priority settings for IP streams classified by IP address, Diffserv class, IEEE 802.1p priority tag, MPLS EXP field, and VLAN ID Dynamic Routing: RIP, OSPF and BGP
	<input checked="" type="checkbox"/> AES-256 Encryption: TCP/IP packet payload encryption using symmetric AES with 256-bit keys
Optional Features	
Extend Tx Data Rate	<input type="radio"/> 5Mbps: Extends base operation to 5Mbps <input type="radio"/> 10Mbps: Extends 5Mbps operation to 10Mbps <input type="radio"/> 25Mbps: Extends 10Mbps operation to 25Mbps <input type="radio"/> 100Mbps: Extends 25Mbps operation to 100Mbps <input type="radio"/> 345Mbps: Extends 100Mbps operation to 345Mbps
Add Advanced IP Features	<input type="radio"/> Compression: IP/UDP/TCP/RTP packet header compression (RFC 3095) plus Ethernet header compression; TCP/UDP packet payload compression using the Deflate algorithm (RFC 1951) <input type="radio"/> Acceleration: Up to 4,400 concurrent accelerated TCP connections to 100Mbps subject to prevailing data rate limits
DVB-S2X	<input type="radio"/> DVB-S2X CCM, ACM, VCM: QPSK, 8PSK, 8APSK, 16APSK, 32APSK & 64APSK Tx/Rx operation per EN 302 307-2. Includes 5%, 10%, 15%, 20%, 25% & 35% spectral roll-offs. Includes DVB features; ACM, VCM and DVB encapsulation. To 345/230Mbps subject to prevailing modem data rate limits. <input type="radio"/> Advanced Modulation: 128APSK, 256APSK, 256APSK-L
BUC	<input type="radio"/> Enable BUC PSU software feature to provide DC via the IFL to power a BUC. 6A Max at 24V supplied via the Modem PSU

Global Sales Offices



U.S. HEADQUARTERS (RF)
Teledyne Paradise Datacom
11361 Sunrise Park Drive
Rancho Cordova, CA 95742
sales@paradisedata.com

Global Business Development & Sales Director (RF)
Timothy Sheerin, (508) 273-5902
timothy.sheerin@teledyne.com

Sales Director, Eastern U.S. & Latin America (RF)
John O'Grady, (848) 220-6464
john.ogrady@teledyne.com

Sales Director, Western U.S. & Canada (RF & Modem)
Bruce Grieser, (480) 444-9676
bruce.grieser@teledyne.com

U.K. HEADQUARTERS (Modem)
Global Business Development
& Sales Director (Modem)
Paul McConnell
Teledyne Paradise Datacom
106 Waterhouse Lane,
Chelmsford,
Essex, England, CM1 2QU
Tel: +44(0)1245 847520
Mobile: +44(0)7720 707499
paul.mcconnell@teledyne.com



Teledyne Paradise Datacom reserves the right to change specifications of products described in this document at any time without notice and without obligation to notify any person of such changes.

Refer to the website or contact Sales or Customer Support for the latest product information. The information contained herein is classified EAR99 under the U.S. Export Administration Regulations. The modem itself is classified ECCN 5A002.a.1 and is subject to U.S. Department of Commerce export control. Export re-export or diversion contrary to U.S. law is prohibited.